


Draft

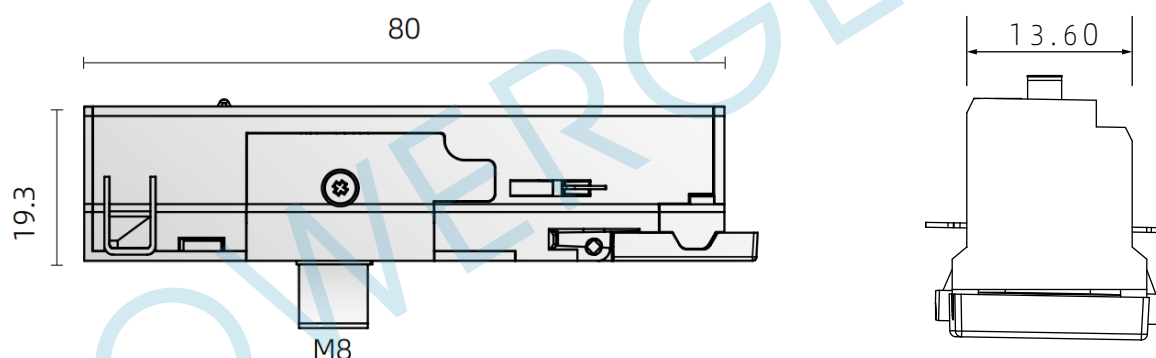
POWERGEAR®

Version:4.00

Datasheet I Mini single circuit adaptor(invisible version)

 <p>Picture for reference only</p>	Product code	PRO-S140B
	Color	Black / White
	Color code	RAL 9005 / 9016
	Main materials	PC UL94V0 + Copper
	Load	10N
	Unit weight	N/A
	Outer package QTY	300 PCS
	Gross weight per carton	N/A
	Package size	515*305*230 mm
	Voltage & Max. load	220-250V/6A

Dimensions(mm)

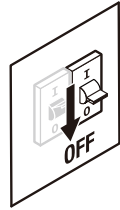


Including screws and nipple(optional)

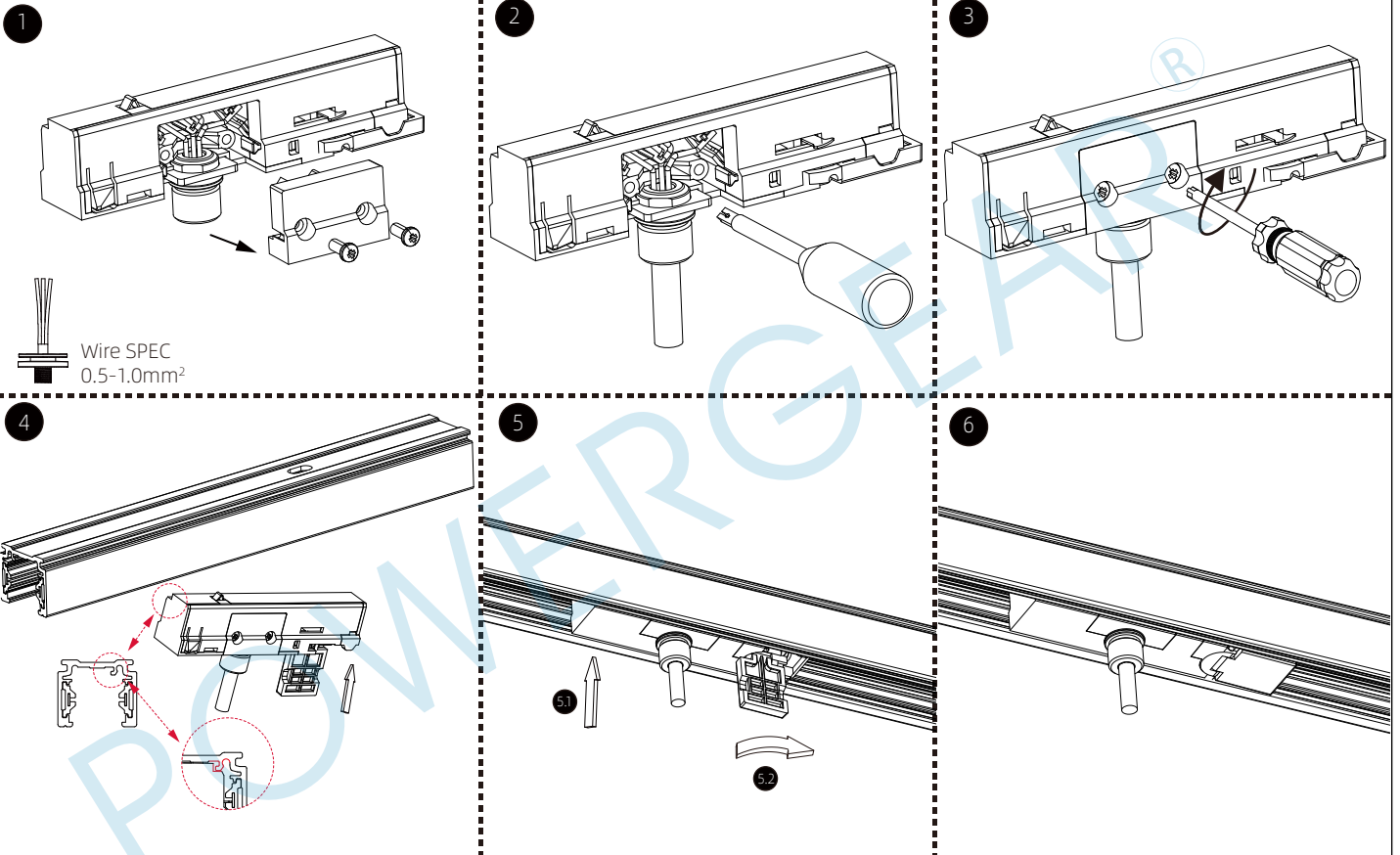
Notes: Apply to POWERGEAR MINI single circuit track system



Installation please read carefully before installing



Tools



Troubleshooting

1. The adaptor cannot be installed into the track: please pay attention to the direction restrictions in Step 4;
2. The in-track adaptor doesn't work: Please check that step 3 wiring is correct/secure, and ensure that step 7 turntable is in "ON".

Disclaimer

1. It is forbidden to apply paint, glue, etc. to this product.
2. It is recommended to use POWERGEAR track system, compatibility with other track system is not guaranteed.
3. This product is suitable for indoors, not outdoors.
4. If the structure or wiring of this product is not used/modified according to the instructions, resulting in damage to this product or related products, POWERGEAR doesn't continue to maintain the after-sales commitment.
5. Product optimization and version upgrade will not be prior noticed. Please refer to the actual product received. If you have any questions, please contact our sales staff in time.
6. POWERGEAR reserves the right of final interpretation of this document.